

Focused Array Surface Adapting Technology

The FASAT Advantage

Phased array technology has become the standard for many UT inspections. The customary approach is to pre-set a limited number of focal laws to achieve the desired beam focus. Examination information is therefore limited by the focal laws and other parameters set at “the front end” of the test. Also, the surface needs to be smooth and geometrically consistent, or the inspection could become too complicated, or infeasible. With the Focused Array Surface Adapting Technology (FASAT) system, these limitations no longer apply.

Common geometry conditions that can prove problematic for UT examinations are:

- Weld crowns
- Tapers
- Steps
- Elbows
- Asymmetric shapes
- Complex, arbitrary geometries
- Unknown, unconventional geometries

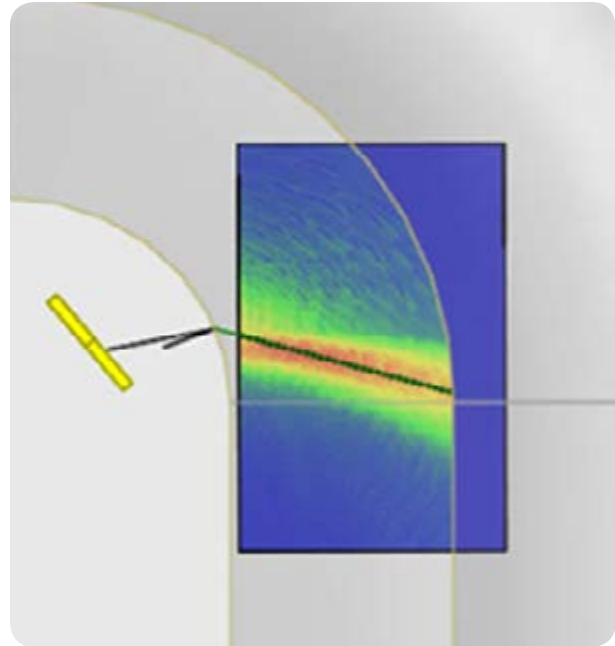
As its name implies, FASAT adapts to complex, arbitrary surface changes, delivering complete volumetric inspections with a single scan. FASAT digitizes and stores all acquisition data allowing the operator unlimited processing capability without the need to rescan.

The FASAT System

The FASAT system is comprised of an array transducer or a transducer set mounted within a captive couplant probe. The probe is passed over the surface of the test part with the aid of a scanner. The UT pulser/receiver instrument, computers and operating software complete the system.



FASAT delivers real-time focusing through complex, arbitrary surface changes



FASAT inspects tough geometries such as the intrados region of pipe elbows

The FASAT instrument controls the pulsing and receiving of every element so that all ultrasonic RF data can be discretely separated and stored. This extremely powerful feature means all data resulting from every possible transmitter-receiver element pairing is recorded, resulting in the storage of all information that can be obtained from a UT inspection; no additional scanning is required for a revised look at the test material.

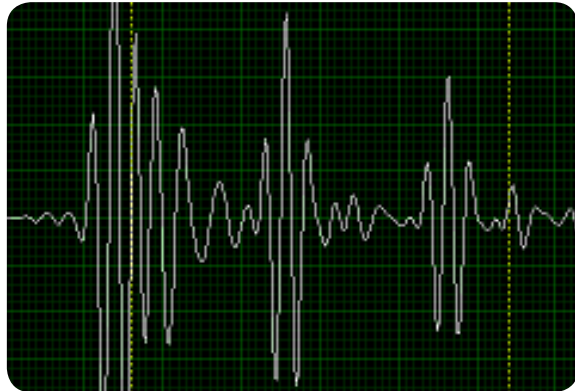
Real-time focusing through complex surfaces, plus storage of all raw data is made possible through “super” computing power only recently available on a practical scale. Acquired data can be manipulated in an unlimited fashion, with any desired focal depth, beam angle, or other parameter desired to achieve optimized examination of any location within the test medium. The raw data remain unchanged and available for continued processing and evaluation.

Measurement thru Grayloc® Weld Cap

The figures on this page illustrate the application of the FASAT technology to the measurement of thickness through CANDU feeder tube grayloc weld caps. The figures illustrate FASAT's ability to accurately map the surface profile and obtain a good back wall reflection through the Grayloc weld.



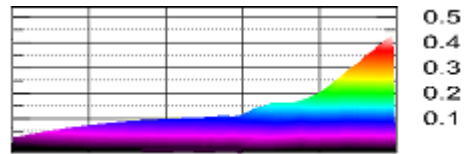
A-scan from tube adjacent to Grayloc weld



A-scan from propagating thru Grayloc weld



CANDU feeder tube Grayloc weld region



FASAT measured surface profile.

Applications

With FASAT's ability to inspect multi-dimensional surfaces, store all raw data, then manipulate it at will based on the operator's needs, an extremely wide range of inspection applications is possible. Such applications include:

- Wavy or smooth welds
- Weld overlays
- Nozzles
- Pipe elbows
- Tapered parts
- Wing structures
- Blades
- Pipe T's
- In-process manufacturing

NUCLEAR ENERGY

GOVERNMENT SERVICES

ADVANCED TECHNOLOGIES

Headquartered in Lynchburg, Va., BWX Technologies, Inc. (BWXT) is a leading supplier of nuclear components and fuel to the U.S. government; provides technical, management and site services to support governments in the operation of complex facilities and environmental remediation activities; and supplies precision manufactured components and services for the commercial nuclear power industry. BWXT has more than 5100 employees and significant operations in Lynchburg, Va.; Erwin, Tenn.; Mount Vernon, Ind.; Euclid, Ohio; Barberton, Ohio; and Cambridge, Ontario, as well as more than a dozen U.S. Department of Energy sites around the country. Follow us on Twitter @BWXTech and learn more at www.bwxt.com.

The information contained herein is provided for general information purposes only and is not intended nor to be construed as a warranty, an offer, or any representation of contractual or other legal responsibility.

Products and services herein described are provided by BWXT Nuclear Energy, Inc., a BWXT subsidiary.

© 2015 BWXT Nuclear Energy, Inc. All rights reserved.



BWXT Nuclear Energy, Inc.

2016 Mt. Athos Road
Lynchburg, VA 24504-5447 USA
t: + 434.522.5165
f: + 434.522.6860

www.bwxt.com

