

NDE Products & Services



INTECH

About Intech International

Intech International Inc. (Intech) is a leading supplier of products and services specializing in Non-Destructive Examination (NDE), maintenance, and staff augmentation services. Our expert team of experienced and certified technicians and engineers provide NDE and related solutions that are deployed to a variety of industries. Services ranging from a single person to a small crew providing conventional NDE all the way up to an advanced NDE and engineering solutions supported by the deployments of 100+ personnel are all part of Intech's strengths and core capabilities.

In 2008, the Intech group of companies were acquired by BWXT Canada Ltd. (BWXT Canada). Intech clients are now backed by B&W's engineering, design, construction, inspection and repair service capabilities, and the largest industrial NDE facility in Canada - adding to the depth of service Intech is able to provide.

We provide innovative solutions to a wide range of industries, including:

- Oil & Gas
- Petrochemical
- Pipeline
- Manufacturing
- Power Generation (Fossil and Nuclear)
- Heavy Equipment
- Steelmaking
- Aerospace
- Heavy Equipment/Transportation
- Offshore
- Government

NDE Capabilities

Intech offers the techniques, equipment, and expertise



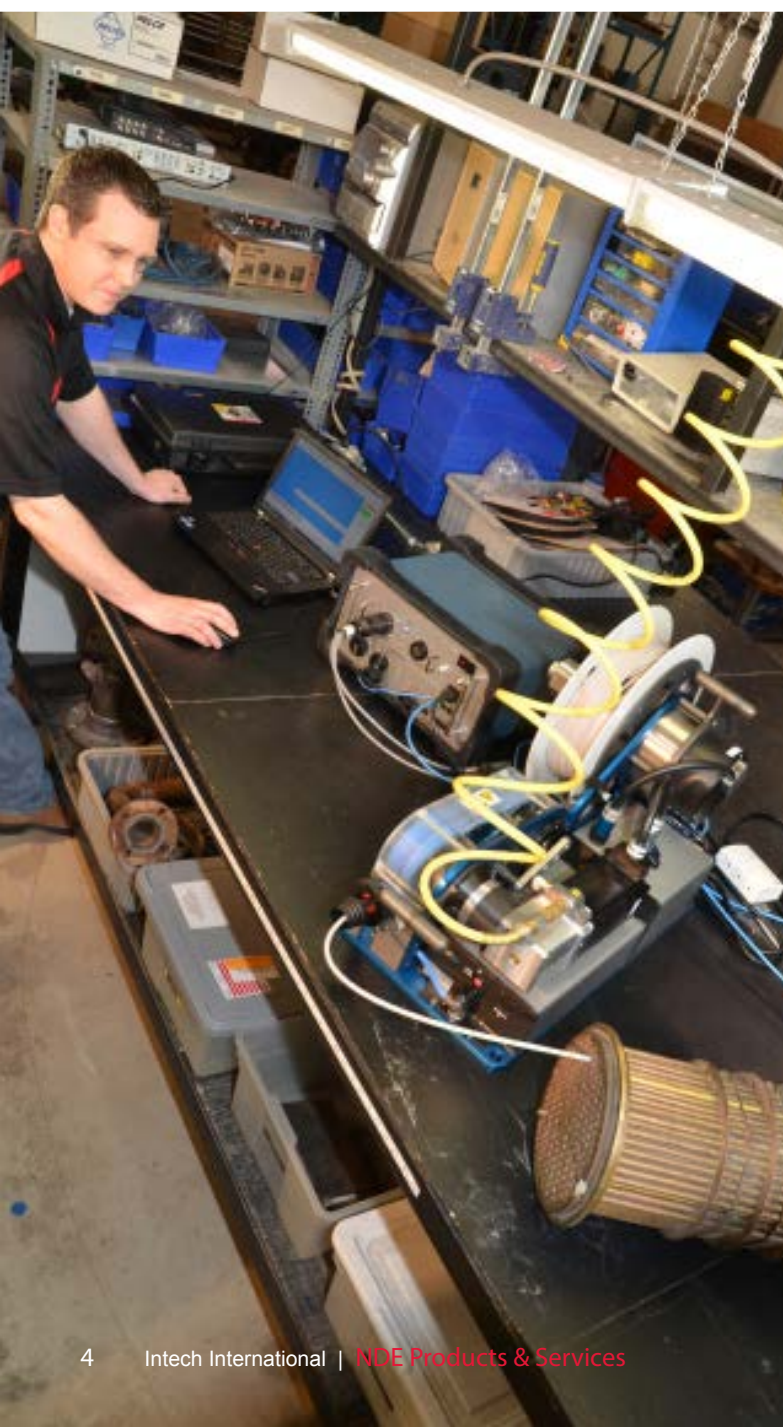
Tube Inspection



Intech provides professional, qualified, and experienced personnel to perform tube inspections for the power generation, petrochemical, pulp and paper, and many other industries. Intech specializes in the inspection of heat exchanger tubing, offering the highest quality exams with Canadian General Standards Board (CGSB), ANSI/ASNT CP-189, ASNT/SNT-TC-1A, and EPRI/QDA certified personnel.

Intech provides the following tube inspection related services:

- Eddy Current (ET), Remote Field Testing (RFT), and Internal Rotary Inspection System (IRIS)
- Inspection Program Planning
- Procedure Development and Qualification
- Data Analysis Guidelines and Training Course Preparation
- Calibration Standard Development and Fabrication
- Specialized Testing Technique Development
- Off-site Data Analysis via the Internet
- Data Management and Tube Sheet Map Generation



Visual Inspection

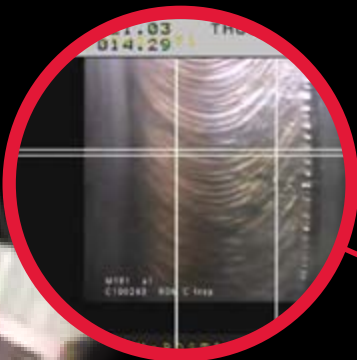
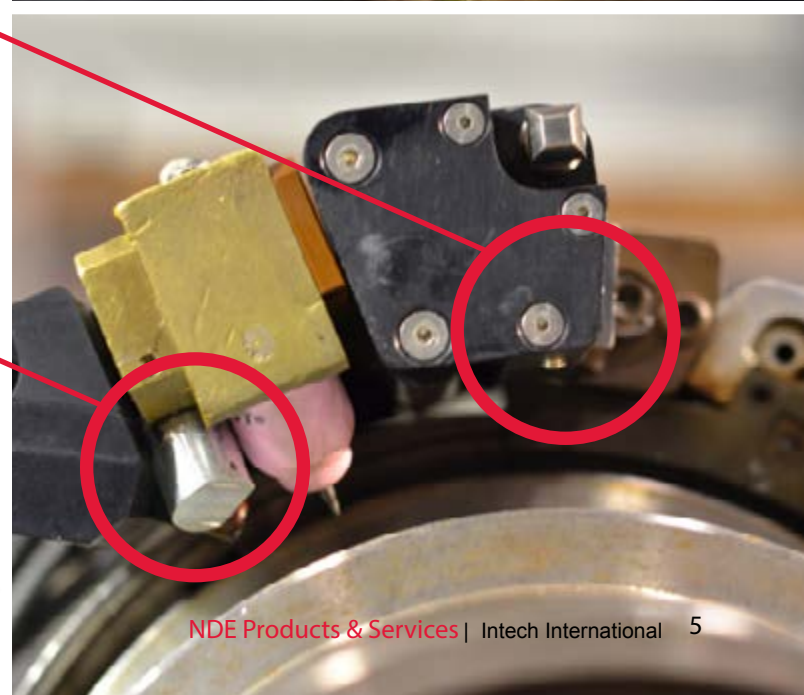
Intech incorporates advanced video processing and camera technology into its visual inspection service, enabling our certified inspectors to detect defects not otherwise detectable by the unaided eye.

Equipment

- Remote Visual Inspection Systems
- Weld Inspection and Measurement Systems
- Pan, Tilt, and Zoom Cameras
- Boroscope, Dimensional and Visual Inspections
- Custom Engineered Cameras and Tooling

Personnel

- CWB and ASNT certified Inspectors
- Remote Confined Space Monitoring



Weld puddle camera

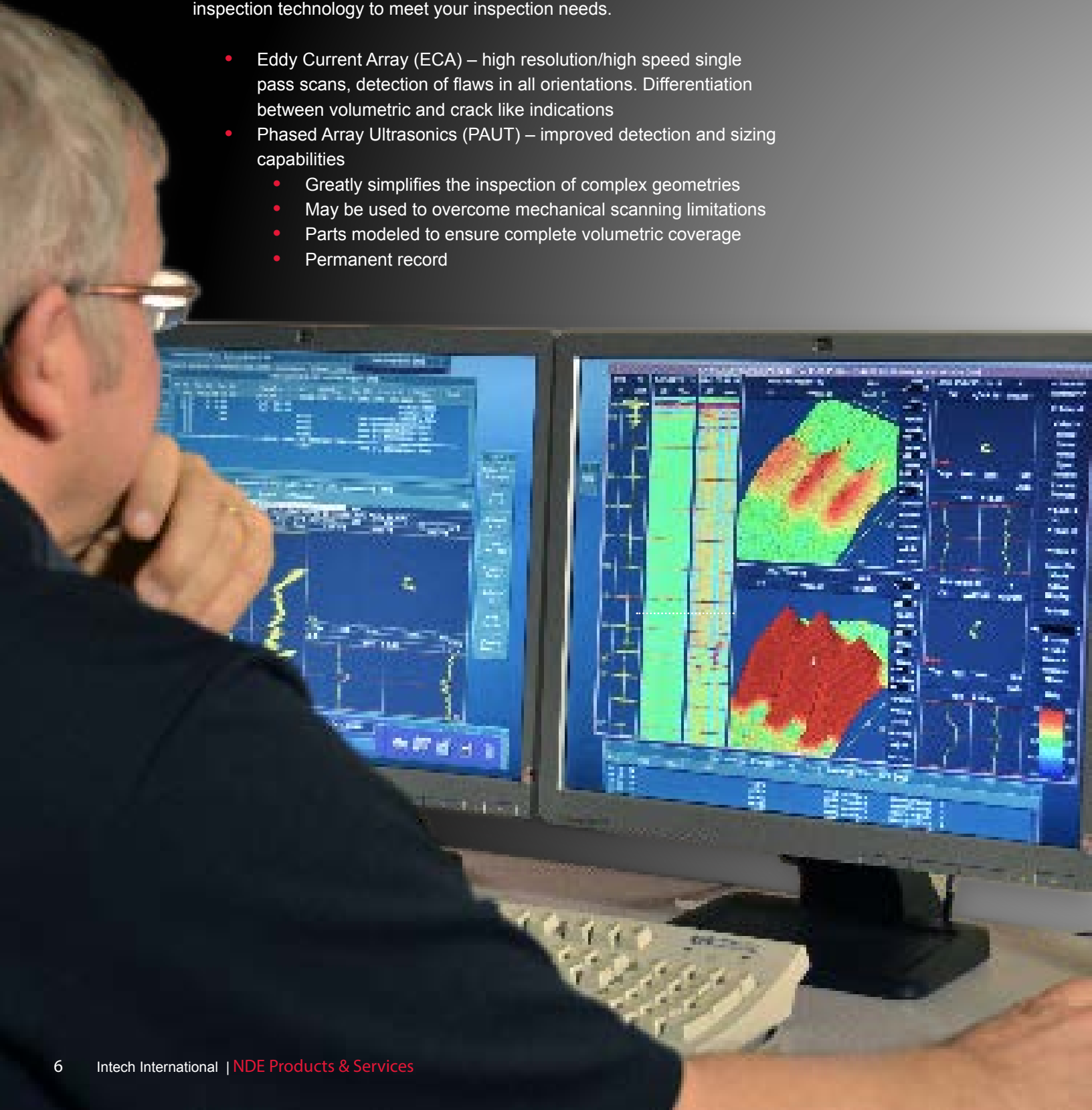


Inspection camera

Advanced NDE

As product designs and materials progress, advanced NDE techniques ensure the ability of complex systems to meet customer demands. Intech offers high quality inspection solutions using the latest advancements in inspection technology to meet your inspection needs.

- Eddy Current Array (ECA) – high resolution/high speed single pass scans, detection of flaws in all orientations. Differentiation between volumetric and crack like indications
- Phased Array Ultrasonics (PAUT) – improved detection and sizing capabilities
 - Greatly simplifies the inspection of complex geometries
 - May be used to overcome mechanical scanning limitations
 - Parts modeled to ensure complete volumetric coverage
 - Permanent record



Conventional NDE

Intech provides a wide range of conventional NDE services that can be performed on your castings, forgings and pressure vessel components. We use both portable and lab based equipment so that inspections can take place either on your site or at one of our off-site facilities.

- Ultrasonics (UT) - surface and subsurface discontinuity detection, thickness testing, and corrosion mapping
- Magnetic Particle (MT) – portable prods and yoke equipment for detecting surface and near surface discontinuities
- Liquid Penetrant Testing (PT) – visible and fluorescent particles and dyes for surface breaking defects
- Eddy Current (ET) – portable instrumentation for inspecting non-ferrous tubing, aircraft surfaces, and automotive parts
- Radiography (RT) – radiographic services ASNT and CGSB Level III Services
- Positive Material Identification (PMI) – identifies alloy composition
- Material Hardness Testing



Engineered Solutions

Our team of engineers produce automated, fully integrated, production qualified systems to satisfy the most stringent requirements. We specialize in solving application problems that benefit from the use of:

- Surface Correcting Matrix Focus UT for rough and wavy surfaces
- Phased Array Ultrasonics (PAUT)
- Electromagnetic Acoustic Transducers (EMATs)
- Phased Array EMATs
- Laser Metrology

For inspections that offer complex geometries, space and clearance restrictions, and other unique challenges, our engineers provide a practical inspection solution.

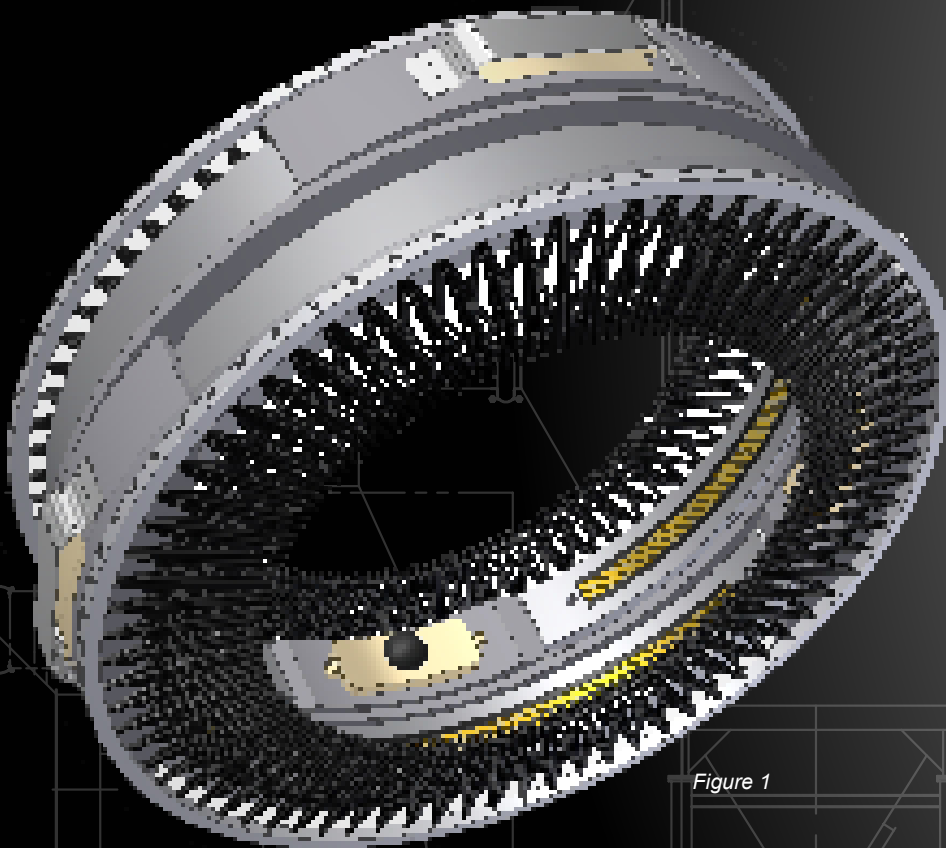


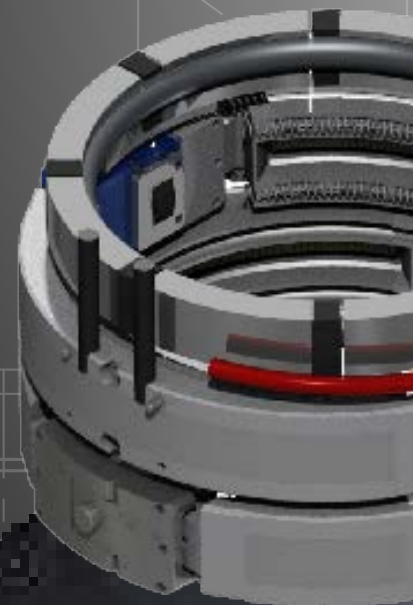
Figure 1

Feeder Inspection Bracelet

Figure 1: Conceptual design assembly

Figure 2: Prototype design assembly

Figure 3: Prototype design – probe housing



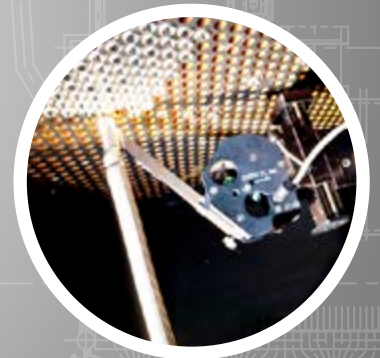


Figure 2

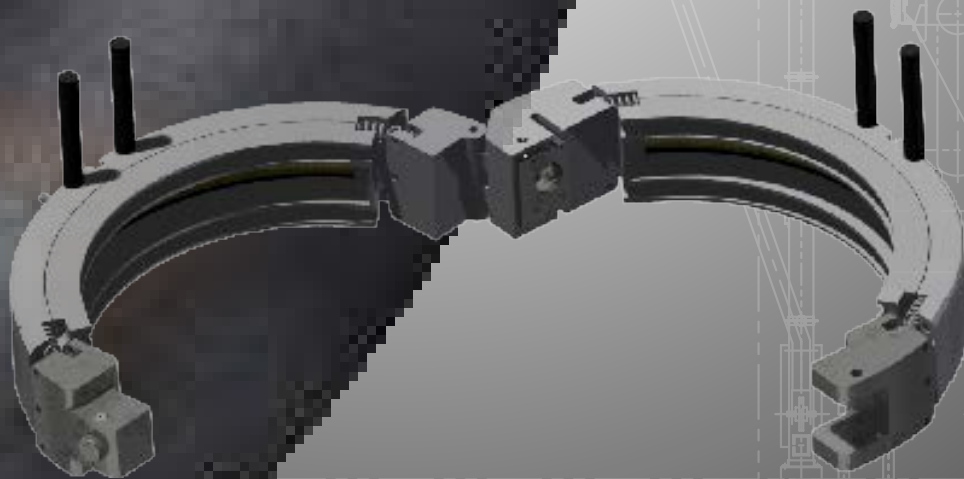


Figure 3

Off-Site Data Centres



Intech maintains four fully equipped Data Centres for off-site Analysis and Data Management

- Real Time Data Analysis servicing North America, South America, Europe, and Asia
- Eliminates on-site training costs
- Eliminates mobilization, demobilization, and daily subsistence costs

Centres located in:

1. Dundas, Ontario
2. Cambridge, Ontario
3. Lynchburg, Virginia
4. Chattanooga, Tennessee



Staff Augmentation

Staff augmentation is a major focus of Intech's field services. Intech provides professional, qualified, and well trained personnel in support of various NDE worksopes. Our personnel can fit seamlessly into your organization or work independently on "turn-key" projects.

- 600 field service personnel deployed in Ontario
- Partnerships with Durham and Mohawk College NDE Programs
- Agreements in place with Quality Control Council of Canada (QCCC)
- NDE Technicians certified by various governing bodies, CGSB, BINDT, CWB, ASNT
- ET, UT, RT, PT, MT, XRF, CEDO, and Visual Inspectors.
- Certified Rope Access Technicians
- QC and QA

Training

Canada's largest NDE and mechanical services training facility centrally located at BWXT Canada in Cambridge, Ontario ensures that only fully trained and certified personnel are deployed to your jobsite.

- HPI, Event Free Tools, FME form the cornerstone of our training
- Training and Skill Learning Center:
- 60,000 sq. ft. training area with > 70 mock-ups
- Qualified trainers on staff
- NRCAN Accredited CGSB Training Courses
 - CGSB ET I, II and III
 - CGSB UT I
 - CGSB Workshops (ET, UT, PT)
 - Canadian Nuclear Data Analyst (CNDA)



Safety

Intech's commitment to safety is evident in the more than 750,000 hours without a lost time incident, and our recent awards and achievements.

This includes winning the CEO Award for Achieving Target Zero. Target Zero, a process that emphasizes a vision of zero accidents, reflects Intech's commitment to the safety of each employee. Through ongoing training, management, dedication and employee involvement, Intech will continue to aggressively pursue a safe work environment – free of injury.

Intech also was presented with the President's Award for Best Performing Business Unit. The President's Award for Best Performing Site was presented to Intech International for "best in class" Safety Performance. This award also recognizes the Employees at Intech for their exemplary efforts, commitment and hard work on implementing the Target Zero Initiative and quest toward "Finishing Each & Every Day, Incident and Injury Free".



Intech International Inc.
20 Innovation Drive
Dundas, Ontario, Canada
L9H 7P3

1-905-689-7300
info@intech-intl.com
www.intechinternational.com

BWX Technologies Inc. - a leading supplier of nuclear components and fuel to the U.S. government; provides technical, management and site services to support governments in the operation of complex facilities and environmental remediation activities; and supplies precision manufactured components and services for the commercial nuclear power industry.

© 2015 Intech International Inc. All rights reserved.